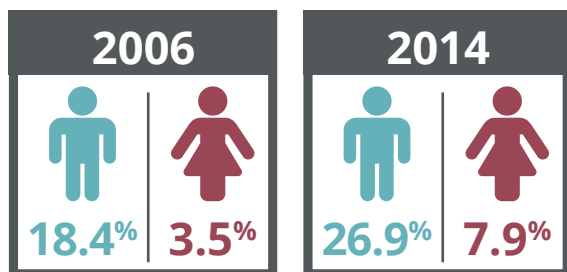


**FAST FACTS**

research.swe.org

**FRESHMEN INTENTIONS TO MAJOR IN ENGINEERING, MATH, STATISTICS, OR COMPUTER SCIENCE:**



**WOMEN LEAVING ENGINEERING/STEM**

**OVER 32%**

of women switch out of STEM degree programs in college.

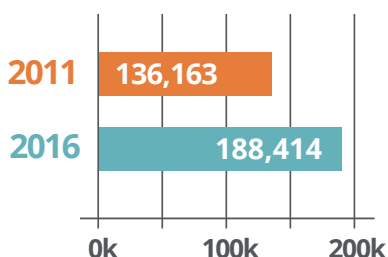
**ONLY 30%**

of women who earn bachelor's degrees in engineering are still working in engineering 20 years later.

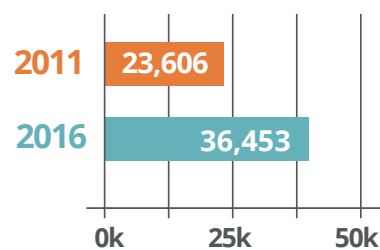
**30%**

of women who have left the engineering profession cite organizational climate as the reason.

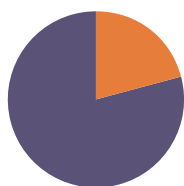
**Degrees Awarded**



**38%** increase in total bachelor's degrees awarded in engineering and computer science.

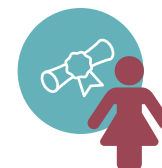


**54%** increase in bachelor's degrees awarded in engineering and computer science to women.



**21.3%** of bachelor's degrees awarded to **women in engineering and computer science.**

**5.6%** of bachelor's degrees in engineering awarded to **women of color.**



## IN THE WORKFORCE

**ONLY 13%** of engineers are women.

**ONLY 26%** of computer scientists are women.

Female engineers  
earn

**90  
CENTS**

for every

**\$1**

male  
engineers  
earn.

**ONLY  
17%**

of tenured/tenure-track faculty  
in engineering are women.



**TOP  
10**

Engineering Degrees:  
Female | **2016-17**

**1** Mechanical

**6** Industrial/Manufacturing/Systems

**2** Chemical

**7** Electrical

**3** Civil

**8** Computer Engineering

**4** Biomedical

**9** Environmental

**5** Computer Science

**10** Metallurgical & Materials

<sup>1</sup>National Science Board. *Science and Engineering Indicators 2016*, Appendix Table 2-16.

<sup>2</sup>Chen, X. (2013). *STEM attrition: College students' paths into and out of STEM fields*.

<sup>3</sup>Corbett, C., & Hill, C. (2015). *Solving the Equation: The Variables for Women's Success in Engineering and Computing*. Washington, DC: American Association of University Women.

<sup>4</sup>Fouad, N. A., Singh, R., Fitzpatrick, M. E., & Liu, J. P. (2012). *Stemming the tide: Why women leave engineering*. University of Wisconsin, Milwaukee.

<sup>5</sup>U.S. Department of Education, Institute of Education Sciences, National Center for Education Statistics, *Digest of Education Statistics 2017*, Tables 325.35 and 325.45.

<sup>6</sup>U.S. Department of Education, Institute of Education Sciences, National Center for Education Statistics, *Digest of Education Statistics 2017*, Tables 325.35 and 325.45.

<sup>7</sup>Yoder B. L. (2018). *Engineering by the numbers*. American Society for Engineering Education.

<sup>8</sup><https://www.nsf.gov/statistics/2017/nsf17310/digest/fod-wmreg/>

<sup>9</sup><https://www.bls.gov/cps/cpsaat11.htm>.

<sup>10</sup><https://www.bls.gov/cps/cpsaat11.htm>.

<sup>11</sup>2016 American community survey (5-yr estimates): Tables B24122 and B24123.